

**Jefferson County
Board of Education**

**Director of Schools,
*Dr. Charles Edmonds***

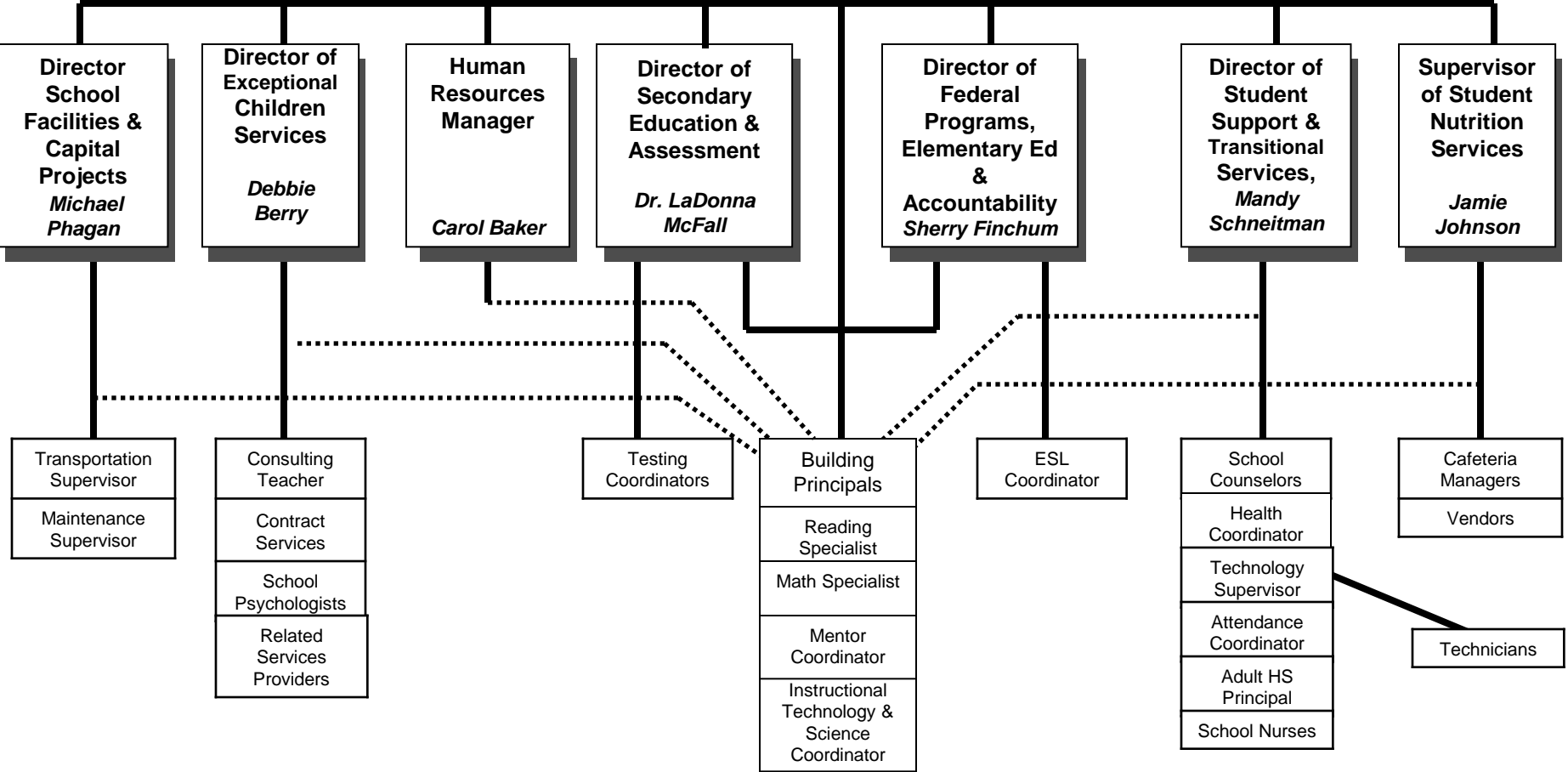
**Assistant Director of Schools,
*Dr. LaDonna McFall***

Director of School Facilities & Capital Projects <i>Michael Phagan</i>	Director of Exceptional Children Services <i>Debbie Berry</i>	Human Resources Manager <i>Carol Baker</i>	Director of Secondary Ed & Assessment <i>Dr. LaDonna McFall</i>	Director of Federal Programs, Elementary Ed & Accountability <i>Sherry Finchum</i>	Director of Student Support & Transitional Services <i>Mandy Schneitman</i>	Supervisor of Student Nutrition Services <i>Jamie Johnson</i>
Maintenance Facilities Use Transportation Capital Projects School Safety OJT/Staff Dev. SACC Programs Complaint Officer Negotiations Team	IEP Gifted Program Speech/Language OT/PT SE PreSchool SpEd Assessment M-Teams/Inclusion Inclusion Coordinator Self-Monitoring SpEd Homebound Inst. Prof Development Complaint Officer DHA Officer Negotiations Team	Licensure Substitutes Recruiting & Screening Employee Orientation Supervise Criminal- Background/DHS Checks Employee Communication Employment law Compliance Teacher of the Year Chief Complaint Officer	Curriculum 6-12 Testing Coordinator Teacher Eval/Mentor Comprehensive Plan Desegregation & Data Analysis Prof Development Publication/ Publicity Race To The Top Title IX Policy Committee DHA Chair Complaint Officer Negotiations Team	Federal Programs Curriculum PreK-5 Teacher Eval/Mentor School Improvement Home Schooling Pre-School Services Calendar Development Textbooks Prof Dev/Inservice SACS Accreditation ESL Services Board Policy Chairman Negotiations Chair Complaint Officer DHA Officer	S-Team Coordinator Extended Contract Alternative School Coord Counselor Coordinator Coordinated School Health Prof Development Crisis Response Homebound Instruction 504 Compliance Technology Planning Title VI Complaint Officer DHA Officer Negotiations Team	Personnel Evaluation Menu Planning Food Purchasing Budgeting Federal Reports State Reports
Subordinate Positions	Subordinate Positions		Subordinate Positions	Subordinate Positions	Subordinate Positions	Subordinate Positions
Transportation Supervisor Maintenance Supervisor SACC Supervisor SROs	SpEd Coordinator School Psychologists Homebound Teachers SpEd Homebound Related Service Providers		Instructional Technology & Science Coordinator Reading Specialist Mentor Coordinator Math Specialist Testing Coordinators Building Principals	Instructional Technology & Science Coordinator Reading Specialist Mentor Coordinator Math Specialist ESL Coordinator Building Principals	School Counselors Technology Supervisor Coordinated Health School Nurses Attendance Coordinator Family Resource Center Homebound Teachers WIA Coordinator Adult HS Principal	Cafeteria Managers

**Jefferson County
Board of Education**

**Director of Schools
*Dr. Charles Edmonds***

**Assistant Director of Schools
*Dr. LaDonna McFall***



Line (Authority) **—————**
Staff (Advisory) **.....**